

## PERFORMANCE

### Processor

Intel® Core™ i7-10510U (4C / 8T, 1.8 / 4.9GHz, 8MB)

### Graphics

Integrated Intel UHD Graphics

### Chipset

Intel SoC Platform

### Memory

16GB Soldered DDR4-2666

### Memory Slots

Memory soldered to systemboard, no slots, dual-channel capable

### Max Memory

16GB soldered memory, not upgradable

### Storage

512GB SSD M.2 2280 PCIe 3.0x4 NVMe Opal2

### Storage Support

One drive, 1x M.2 2280 SSD or 1x M.2 2242 SSD

- M.2 2280 SSD up to 2TB
- M.2 2242 SSD up to 512GB
- Optional Intel Optane™ Memory integrated with SSD, M.2

### Card Reader

MicroSD Reader

### Optical

None

### Audio Chip

High Definition (HD) Audio, Realtek® ALC3287 codec

### Speakers

Stereo speakers, 1W x2, Dolby® Audio™

### Camera

720p + IR with ThinkShutter

### Microphone

2x, Array

### Battery

Integrated 57Wh

### Max Battery Life

MobileMark® 2014: 21 hr

MobileMark 2018: 14.28 hr

JEITA 2.0: 23.1 hr

### Power Adapter

65W USB-C

## DESIGN

### Display

14" FHD (1920x1080) IPS 500nits Anti-glare, Touch, ThinkPad® Privacy Guard

### Touchscreen

10-point Multi-touch

### Keyboard

Backlit, English (EU)

### Case Color

Black

### Case Material

CFRP Hybrid (Top), Magnesium (Bottom)

### Dimensions (WxDxH)

329.0 x 226.15 x 16.7 mm (12.95 x 8.90 x 0.66 inches)

### Weight

1.35 kg (2.98 lbs)

## SOFTWARE

### Operating System

Windows® 10 Pro 64, Romanian / English

### Bundled Software

None

## CONNECTIVITY

### Ethernet

100/1000M via Optional Adapter

### WLAN + Bluetooth™

Intel AX201 11ax, 2x2 + BT5.2

### WWAN

Fibocom L850-GL

### SIM Card

None

### NFC

None

### Standard Ports

- 1x USB 3.2 Gen 1
- 1x HDMI® 1.4b
- 1x headphone / microphone combo jack (3.5mm)
- 1x Ethernet extension connector
- 1x USB 3.2 Gen 1 (Always On)
- 1x USB-C 3.2 Gen 2 / Thunderbolt™ 3 (support data transfer, Power Delivery and DisplayPort™ 1.2)
- 1x USB-C 3.2 Gen 1 (support data transfer, Power Delivery and DisplayPort 1.2)
- 1x side docking connector

### Optional Ports

- 1x Smart card reader
- 1x Nano-SIM + microSD card slot (WWAN model)

### Monitor Cable

None

## SECURITY & PRIVACY

### Smart Card Reader

Smart Card Reader

### Security Chip

Discrete TPM 2.0

### Fingerprint Reader

Touch Style, Match-on-Chip

### Physical Locks

Kensington® Security Slot

### Other Security

- IR camera for Windows® Hello
- ThinkShutter camera cover
- Privacy Guard with Privacy Alert

## MANAGEABILITY

### System Management

None

## SERVICE

### Base Warranty

3-year, Depot

### Included Upgrade

None

## ACCESSORIES

### Bundled Accessories

None

## CERTIFICATIONS

### Green Certifications

- EPEAT™ Gold
- ENERGY STAR® 8.0
- RoHS compliant
- TCO

### Mil-Spec Test

MIL-STD-810G military test passed

## MODEL

TopSeller : Yes

Announce Date : 2020-06-19

EAN / UPC / JAN : 0195042532494

End of Support : 2026-12-05

· Product image on this page is a sample, it may not match the real color of this model

· Battery life is an estimated maximum. Actual battery life may vary based on many factors, including screen brightness, active applications, features, power management settings, battery age and conditioning, and other customer preferences

## Premier Support - A direct 24x7x365 line to our most elite technicians.



Advanced technical support, 24x7x365, in more than 100 markets



Technical Account Managers for proactive relationship and escalation management



Comprehensive hardware & OEM software support



Priority on service delivery and repair parts



Single point of contact for simplified end-to-end case management



Lenovo Service Connect Portal for customized reporting and product support

## Accidental Damage Protection - Protection of your PC from the unexpected.

Experience shows that a significant portion of devices may be damaged (and not covered under warranty) in the first three years. Lenovo's Accidental Damage Protection service covers accidents beyond the system warranty such as drops, spills, bumps and even electrical surges. Make sure your new device has maximum protection, avoid unplanned costs and get peace of mind.

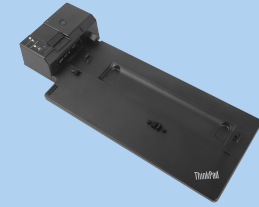
## Base Warranty - Included with the systems you purchase, default 1- or 3-year coverage window.

## Warranty Extensions & Upgrades - Service and protection that's right for your circumstances.

- Pick Up & Return Courier
- Onsite Support
- Technician Installed Customer
- Replaceable Unit Service
- International Warranty Upgrade

Lenovo may not offer the products, services or features discussed in this document in all regions. Lenovo may withdraw an offering at any time. Information is subject to change without notice. Consult your local representative for information on offerings available in your area. Lenovo reserves the right to change specifications or other product information without notice. Lenovo is not responsible for photographic or typographical errors. Lenovo provides this publication "as is" without warranty of any kind, either express or implied, including the implied warranties of merchantability or fitness for a particular purpose.

## Recommended Accessories



### ThinkPad Pro Docking Station (American Standard Plug)

40AH0135US

The innovative side connector of the ThinkPad Pro Docking Station, designed exclusively for ThinkPad notebooks, provides a driver-free way to connect conveniently and securely to a range of USB accessories and externa...

## Recommended Services

BEST	5Y Premier Support Upgrade from 3Y Depot/CCI (5WS0T36204)
BETTER	4Y Premier Support Upgrade from 3Y Depot/CCI (5WS0T36185)
GOOD	3Y Premier Support Upgrade from 3Y Depot/CCI (5WS0T36152)

For a full list of accessories and services, please visit:  
<https://smartfind.Lenovo.com>



**PSREF**  
Product Specifications  
Reference